

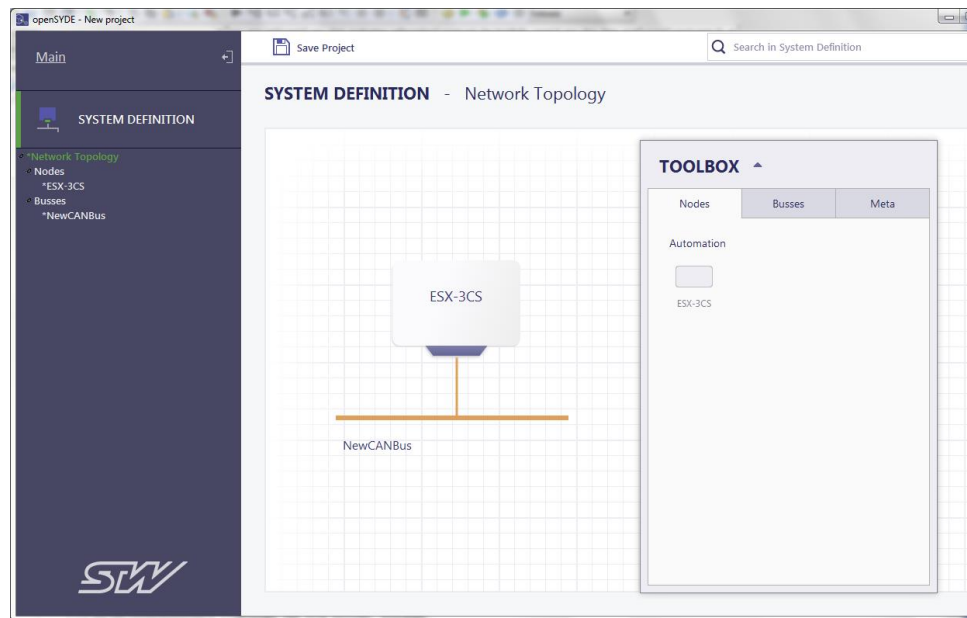
# OpenSYDE Quick Start Guide

## Scope

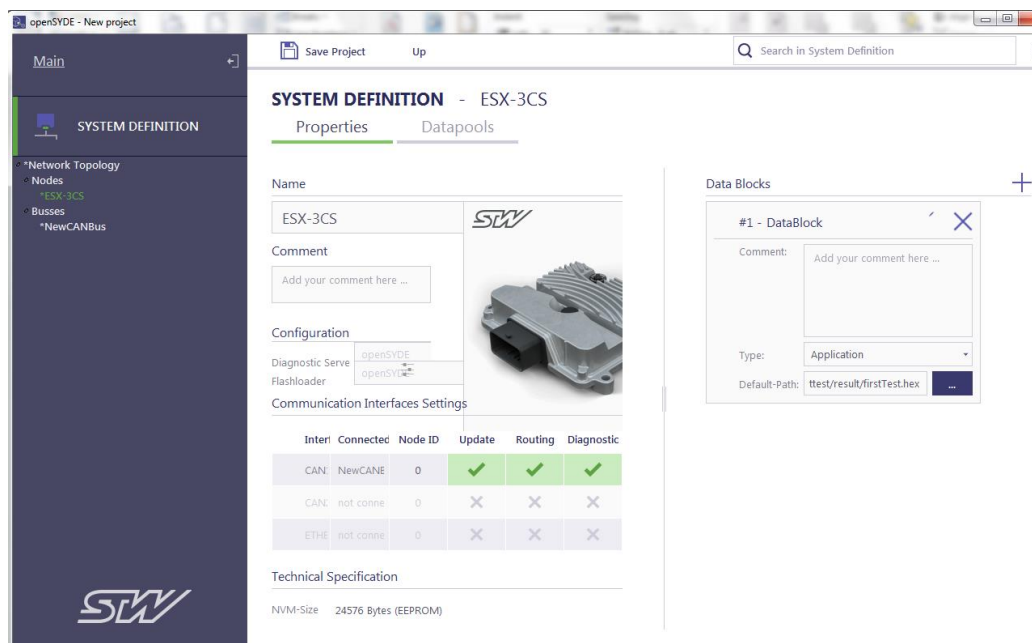
The purpose of this document is to help first time users use the openSYDE software tool to flash supported controllers. This guide is not intended to explain all the features available in openSYDE, or to act as design guide. Once a user is comfortable with programming in openSYDE, they should consult the included documentation.

## System Definition

Using the elements from the toolbox create the desired system layout. Make sure to configure the bus speed to the desired flashing speed (i.e. 150, 250, 500 KB/s) by double clicking the bus element once placed on the network topology. To connect the controller to the bus element hover over the controller object and click & hold the black arrow and drag toward the bus.

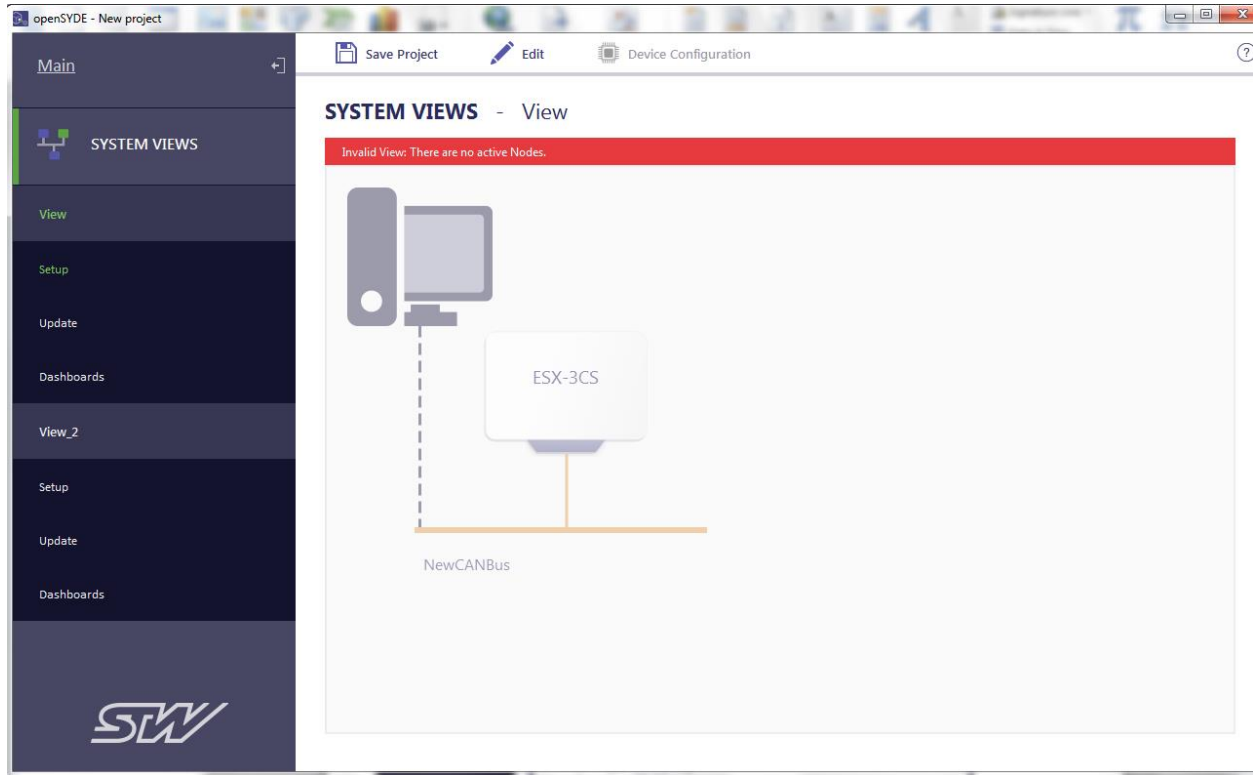


Double-click the controller to access its configuration parameters. You must enter the hex file to use for your controller in the Data Blocks section.

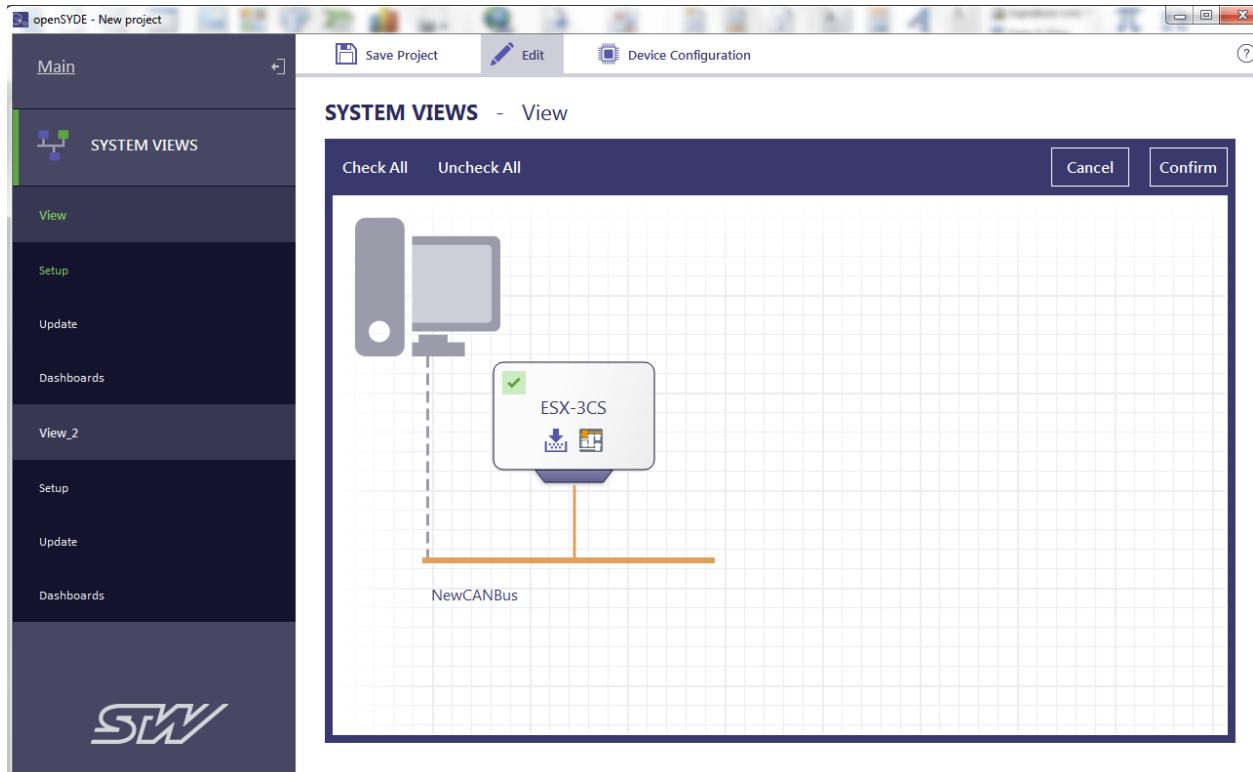


## System views

Go to the System Views and connect your PC icon to the bus as shown in the picture below.

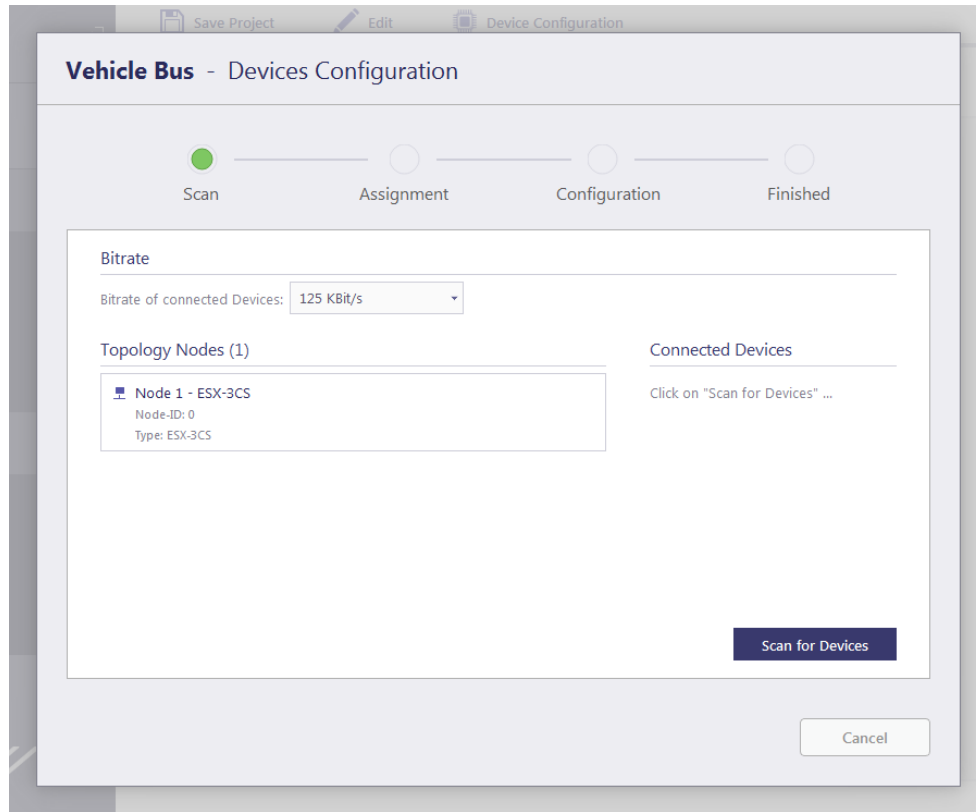


You will need to enable the controller by selecting Edit and then clicking the check box on the controller.

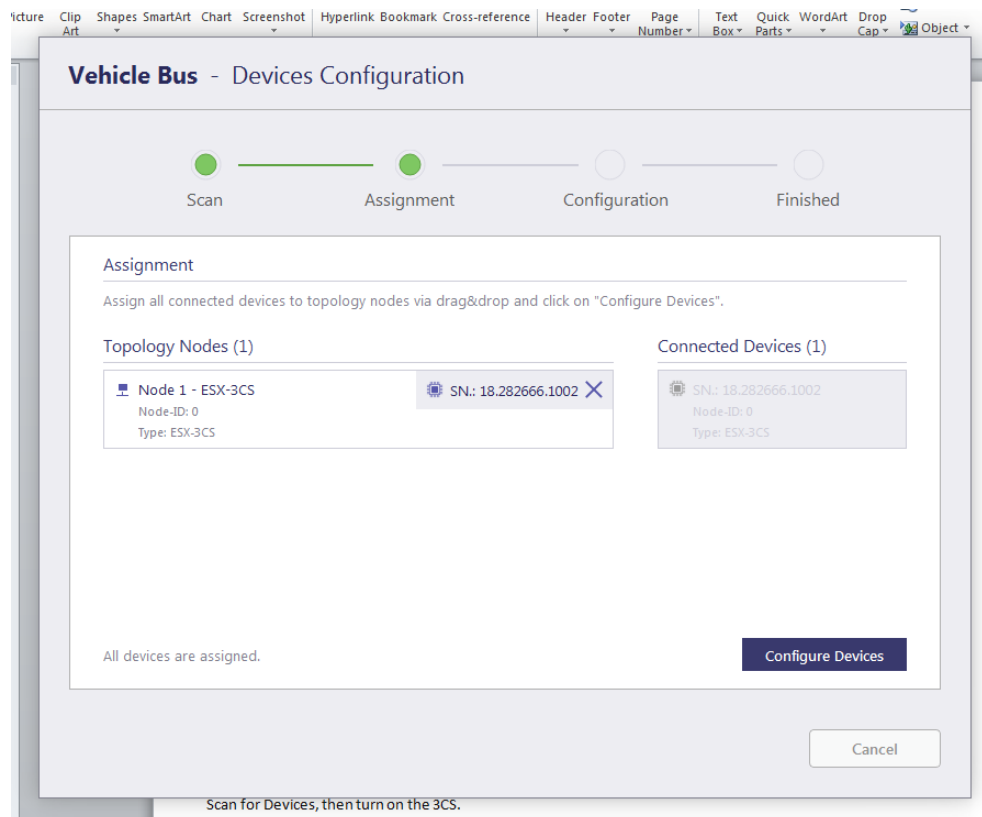


# Device Configuration

First time use, or if your system configuration changes, you need to configure the controller.

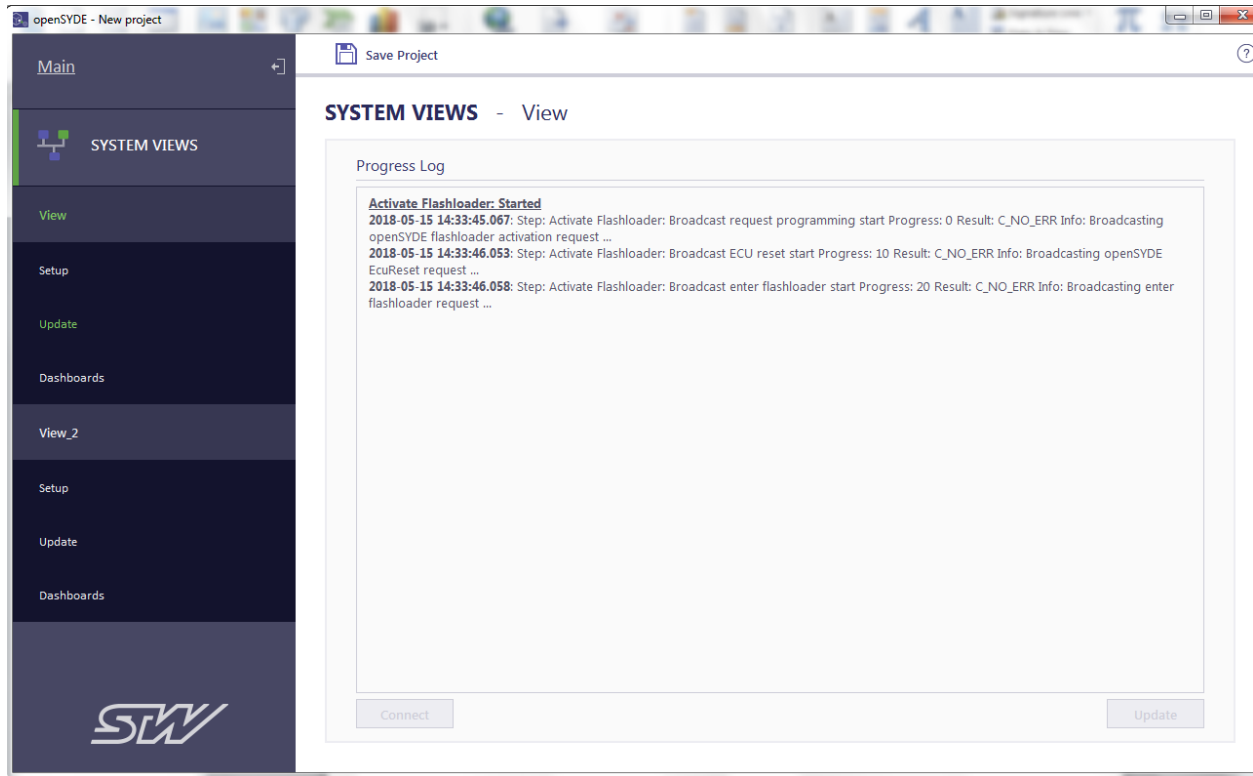


Scan for Devices, then turn on the controller. Drag the found devices into the appropriate system node, then select Configure devices

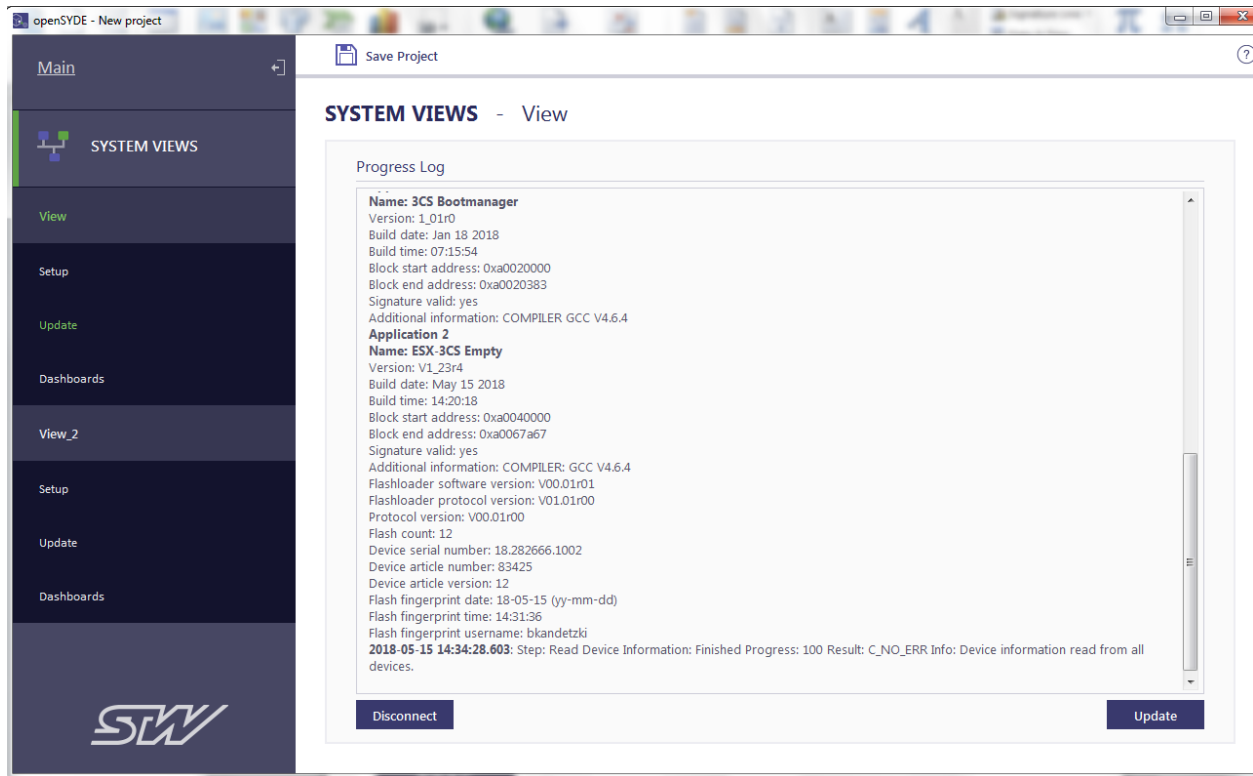


# Update

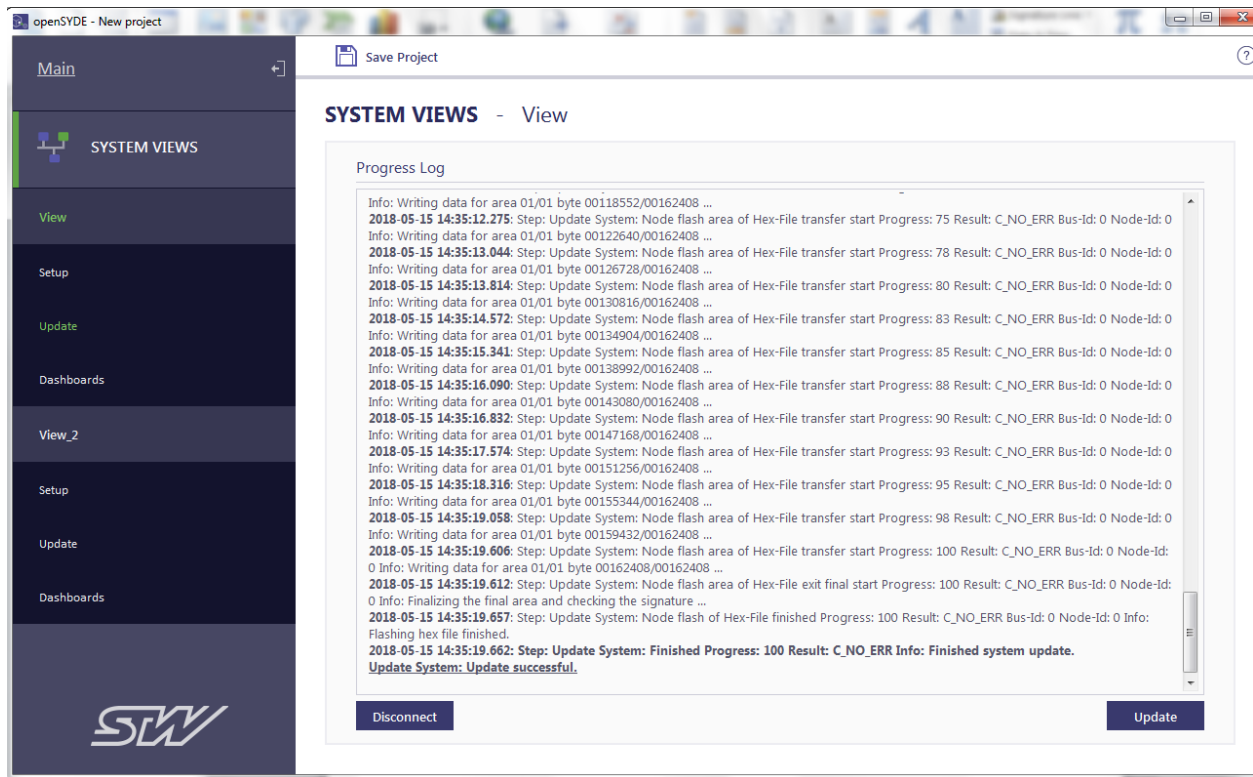
Select Connect, wait for the process to pause, then start the controller.



If the device is found, you can update



Once the update succeeds, you can select Disconnect, and your application will start to run.



STW Technic LP  
3000 Northwoods Parkway  
Suite 240  
Peach Tree Corners, GA 30071  
770-242-1002  
www.stw-technic.com