

# 3CM TOOLCHAIN SETUP

## INSTALLATION AND CONFIGURATION GUIDE

This document is designed to provide a basic guide to installation and configuration of the 3CM C compiler toolchain under Windows. The assumed licensing model in this guide is NODE LOCKED. NETWORK licensing is not covered in this guide.

### HIGHTEC toolchain

#### Installation

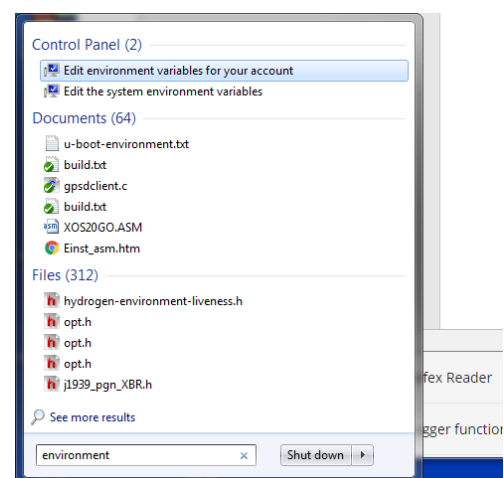
Unzip the toolchain package. Find the Setup.exe file and execute it. I am installing to C:\Program Files (x86)\HIGHTEC, but you can use the default destination of C:\HIGHTEC if you wish.

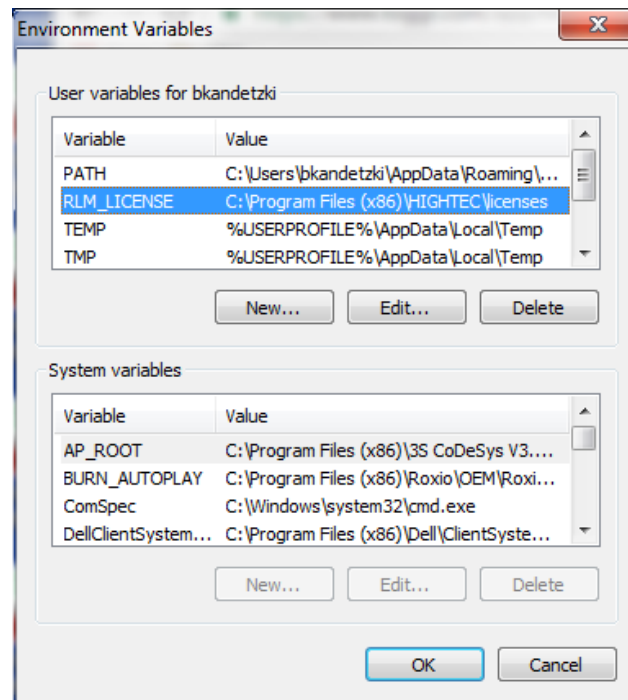
#### Licensing

Copy your license file to the licenses file under the install directory. My folder is C:\Program Files (x86)\HIGHTEC\licenses. Now, we need to add the Environment Variable to tell the toolchain here to look for licensing. Use the Start Menu search bar to look for "environment".

Select the "Edit environment variables for your account" entry. Press the "New..." button, and add an entry for "RLM\_LICENSE". The value should be the path to your license file folder.

When you are finished, press OK to save.



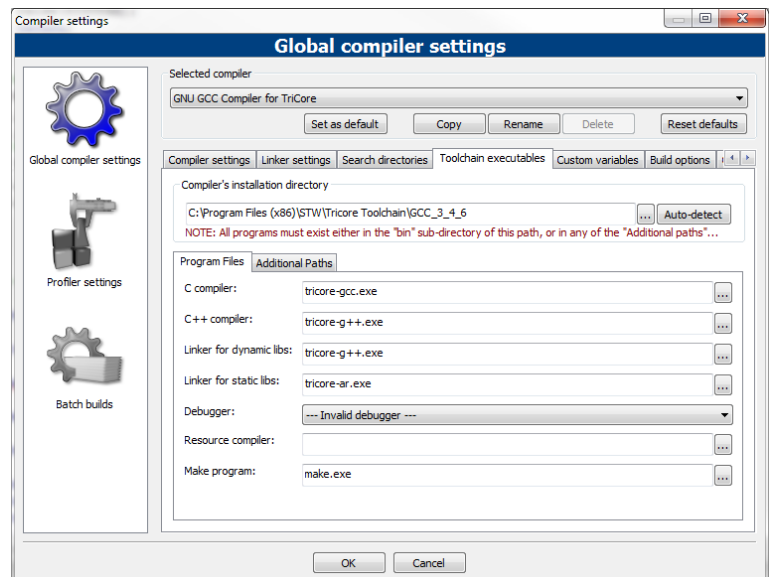


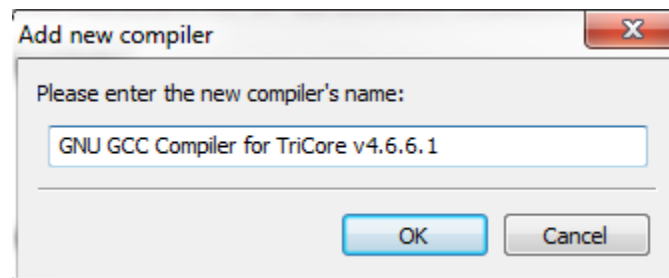
## CodeBlocks

### Compiler Setup

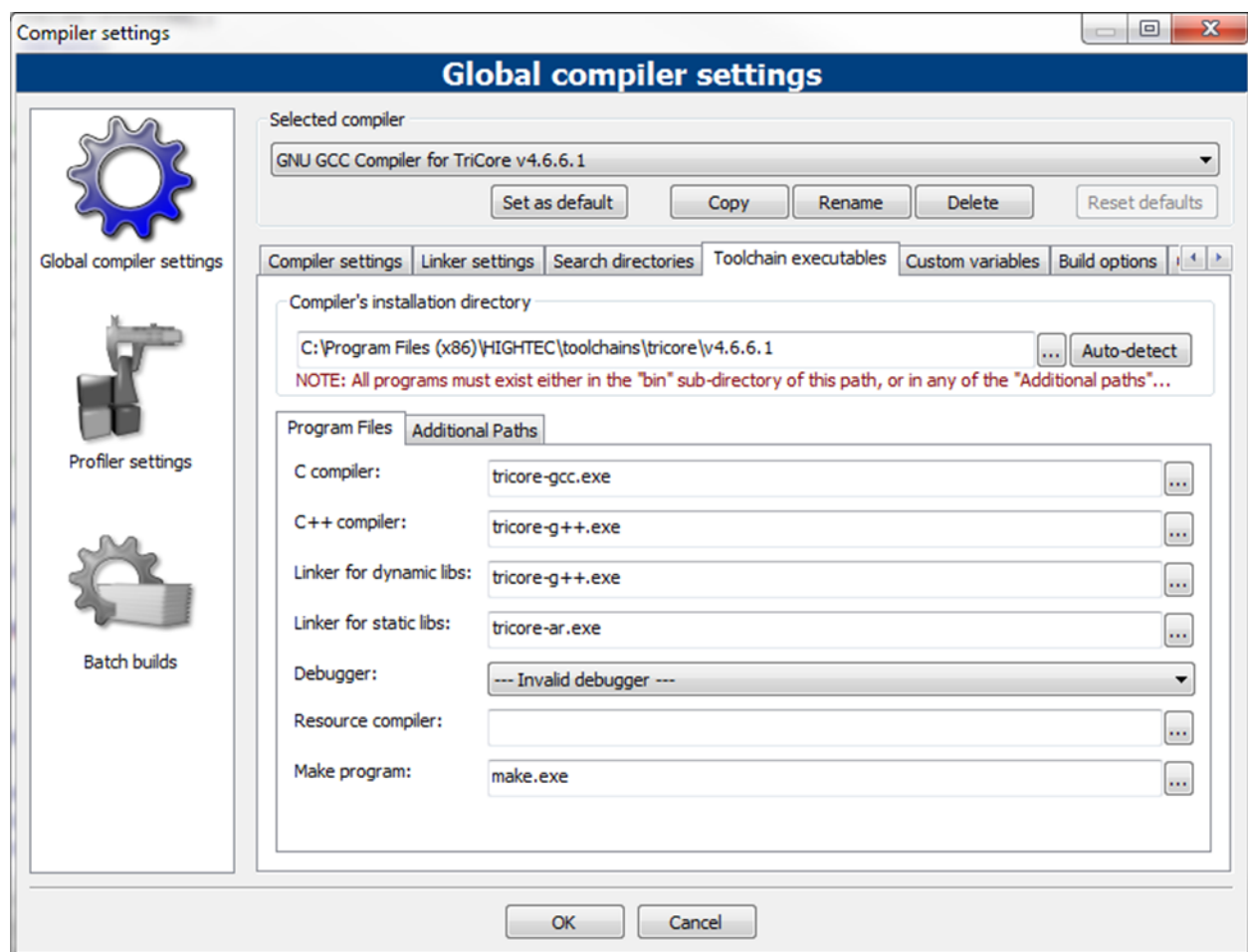
We now need to create a CodeBlocks compiler for the toolchain. Open CodeBlocks, then go to Settings -> Compiler... Select "GNU GCC Compiler for Tricore" from the pulldown.

Then press the Copy button and create a new compiler name.





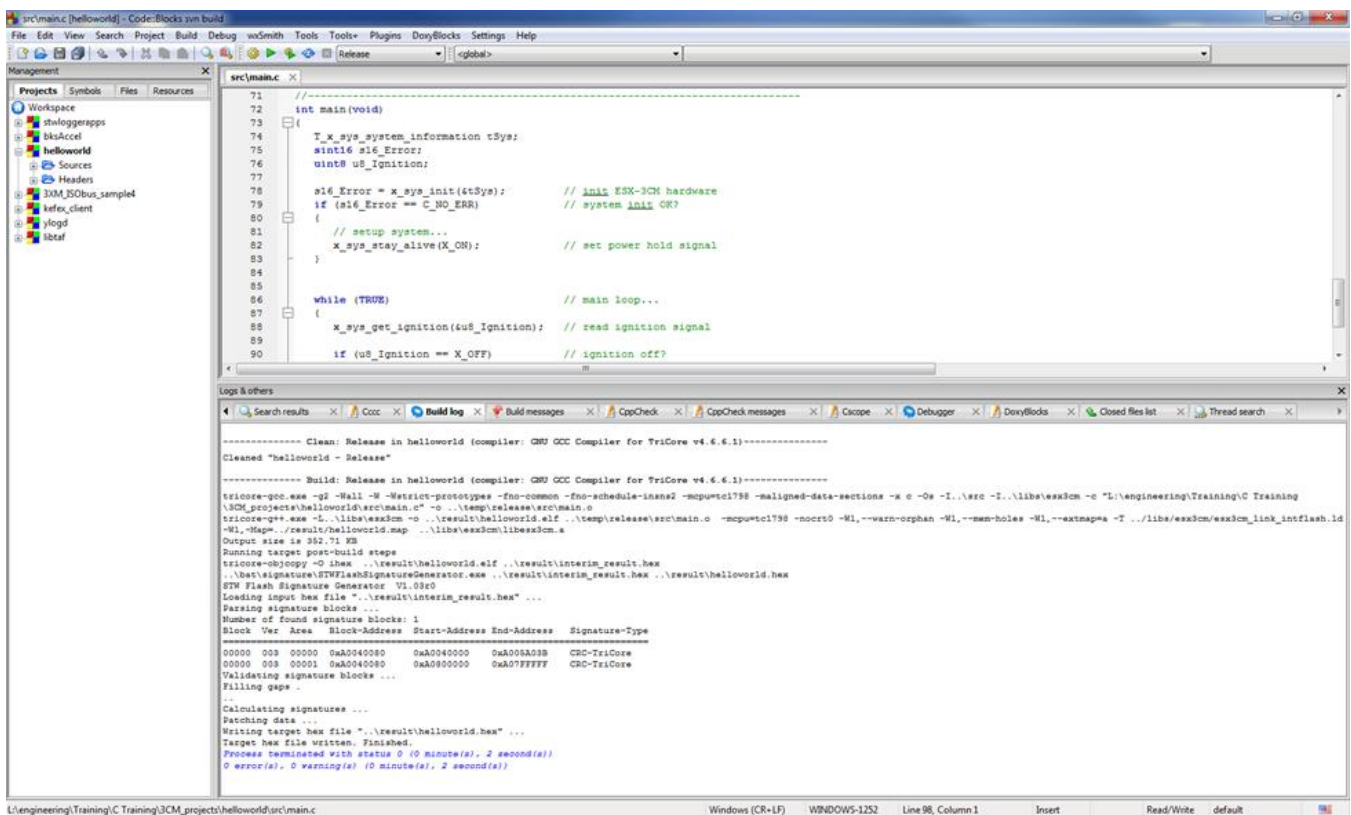
Update the "Compiler's installation directory" with the toolchain path, and confirm that the "Program Files" entries match the settings below



Press OK when finished.

## Confirm Toolchain operation

Follow the instructions in the ESX-3CM User Manual for “Creating a project with STW ECU project wizard”. Make sure to select the new compiler you created for this project. Once created, press the “Build” button to confirm compiler operation.



[Document History]

BEK – 10/07/2016 Initial Version